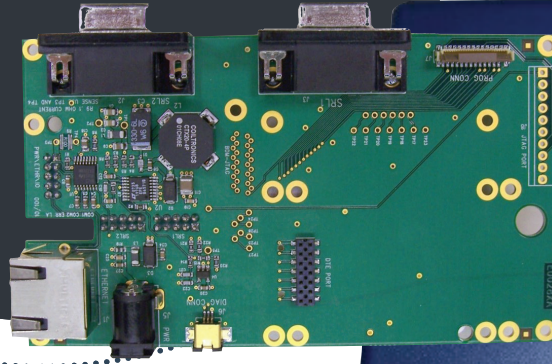


# MM2 SERIES

## \*MM2 900 MHz INDUSTRIAL RADIO DEVELOPERS KITS



### KIT INCLUDES

2 MM2 radios installed on development boards

2 DB9M to DB9F cables

2 power supplies

2 half-wave 900 MHz antennas

1 diagnostics cable

1 loop back adapted for testing communications

1 CD with FreeWave software, diagnostics and documentation

1 CD with FreeWave MM2 Integration Guide for OEMs

Contact us for product details and pricing



+1-703-256-8900 or 800-628-0885  
info@NavtechGPS.com  
www.NavtechGPS.com

### OVERVIEW

The FreeWave MM2 Series is a mini data radio with the industry's best in-class range and all the reliability customers have come to expect in FreeWave radios. The MM2 Series offers the same features and functionality as our proven full size radios in a miniscule size that is designed for embedding into OEM products. The MM2 is ideally suited for applications for which space and weight are at a premium.

The MM2 Developers Kit has all of the tools needed to allow easy integration of the MM2 radio into OEM products. Seven versions of the MM2 Developers Kit are available with various frequencies, interfaces and speeds.

All radios are designed, manufactured and tested in Boulder, CO.

\* This device is regulated under the U.S. International Traffic in Arms Regulation (ITAR). These regulations control the Export and Import of the defense articles. The device may only be sold or transferred to a non-U.S. party (in the U.S. or abroad) after authorization is obtained from the U.S. Department of State. Customer (a) agrees to comply with ITAR regulations and (b) shall be responsible for obtaining all necessary U.S. Government authorizations required to ensure compliance with these and other applicable U.S. Laws. Please contact FreeWave for export control information for specific products.

# TECHNICAL SPECIFICATIONS

## SPECIFICATIONS

MM2-DEVKIT	900 MHz, Serial, 153.6 kbps
MM2-IP-DEVKIT	90 MHz, Ethernet, 153.6 kbps



Contact NavtechGPS for product details. [www.NavtechGPS.com](http://www.NavtechGPS.com)  
+1-703-256-8900 • 800-628-0885 • [info@navtechgps.com](mailto:info@navtechgps.com)

## APPLICATIONS



## CONTACT US

5395 Pearl Parkway, Boulder, CO 80301  
TF 866.923.6168 T 303.381.9200  
For more information, visit [www.freewave.com](http://www.freewave.com)