



## 1.2G1215X-XX-X-NF ANTENNA FAMILY

### Mini GPS L1/L2 Antenna for Bottom Mount Installation

The 1.2G1215X-XX-X-NF receives Global Positioning System (GPS) signal reception in the L1 and L2 frequency bands. This product family uses the mini 1.2G form factor for bottom mount installation using four 2-56 threaded screws. The size and weight of this antenna are minimized by excluding the external mounting flanges.

The product family is available in passive and active (amplified) configurations. The amplified configuration is best suited to applications with a long cable between the antenna receiver, while the passive configuration is best suited to applications where the antenna is positioned close to the GNSS receiver

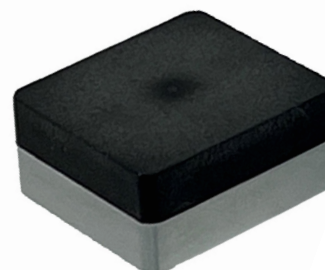
Antcom can customize this product family to meet your specific requirements. Please contact us for more information about customization options.

#### BENEFITS

- Military-grade GPS L1/L2 reception
- Ultra-small and lightweight enclosure

#### FEATURES

- GPS L1/L2 with M-Code support
- Mini 1.2G product form factor
- Passive or active (amplified) configurations available



#### OPTIONS

COLOR	<ul style="list-style-type: none"><li>• Gloss White</li><li>• Lusterless Gray</li><li>• Camo Green</li><li>• Unpainted Black</li><li>• Desert Tan</li></ul>
CONNECTOR	<ul style="list-style-type: none"><li>• SMA</li><li>• MMCX</li><li>• SSMP</li><li>• TNC</li><li>• and more</li></ul>
LNA GAIN	<ul style="list-style-type: none"><li>• With 27 dB LNA</li><li>• Without LNA</li></ul>



Contact NavtechGPS for product details. [www.NavtechGPS.com](http://www.NavtechGPS.com)  
+1-703-256-8900 • 800-628-0885 • [info@navtechgps.com](mailto:info@navtechgps.com)

**ELECTRICAL**

<b>Frequency Range:</b>	
<b>L1 GPS</b>	1575.42 ± 12 MHz
<b>L2 GPS</b>	1227.60 ± 12 MHz
<b>VSWR</b>	< 2.0:1
<b>Impedance</b>	50 ohms
<b>Polarization</b>	RHCP

**MECHANICAL & ENVIRONMENTAL**

Designed to:

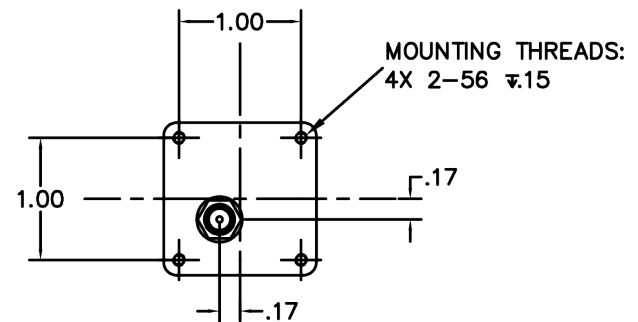
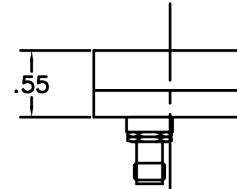
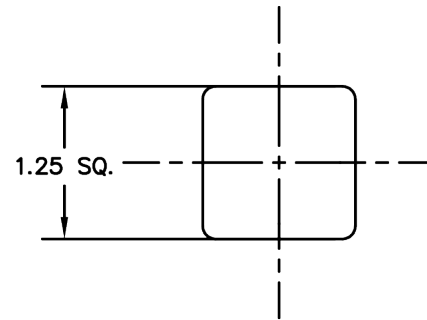
<b>Weight</b>	1.44 oz (Typical)
<b>Temperature</b>	-55°C TO +85°C
<b>Altitude</b>	70,000 ft
<b>Vibration</b>	> 30 Grms

**TYPICAL LNA PERFORMANCE**

<b>LNA Gain</b>	See Options Table
<b>LNA DC Power</b>	(2.8 - 12) V <35 mA

**LIMITING & FILTERING**

<b>Power Handling</b>	1 Watt CW
-----------------------	-----------

**PART NUMBER DECODER****1.2G1215X-XX-X-NF**

**LNA Gain**

A27 = With 27 dB

P = Without LNA

**Connector**

S = SMA

M = MCX

MM = MMCX

T = TNC

L-RM = Right Angle Male Lemo

**Color (PER FED-STD-595B)**

1 = Gloss White #17925

2 = Lusterless Gray #36320

3 = Camo Green #34094

4 = Unpainted Black

5 = Desert Tan #33446



Contact NavtechGPS for product details. [www.NavtechGPS.com](http://www.NavtechGPS.com)  
+1-703-256-8900 • 800-628-0885 • [info@navtechgps.com](mailto:info@navtechgps.com)